



Research Chapter Working Group TERMS OF REFERENCE

**Ecological Society of Australia
Research Chapter Working Group
Terms of Reference**

Purpose

The overall Research Chapter Working Group objectives are:

- Identify key drivers of success of RCs to sustain key initiatives in this regard
- Represent the needs of the RCs to the Board of Directors
- Seek financial and other resources through the Board of Directors to facilitate success of RCs

Strategic Plan

This working group aligns to AIM 1 (Facilitate high quality and relevant research in ecology) of the ESA Strategic Plan 15/16 – 19/20; specifically Strategy a) (Review functioning of research chapters) of the ESA Strategic Plan 15/16 – 19/20. The working group's purpose and responsibilities are consistent with 3.2.a.vii. from the ESA constitution ("facilitating the dissemination and exchange of ideas and information about ecology and the information among the Company's Members, ecologists, other professional disciplines and the general public").

Activities for this working group commenced February 2016.

Responsibilities

The Research Chapter Working Group's responsibilities will primarily be to:

- Serve as a principal point of contact in relation to the formation/sustenance of ESA's RCs
- Oversee the progress of establishing and supporting the ESA's Research Chapters
- Provide web-based tools to facilitate ESA members in the formation/sustenance of effective RCs
- Enable effective communication of RC activities for RC members and the broader ESA membership (including maintenance of up to date information via the ESA RC webpage)
- Guide RCs in the preparation of requests for financial, administrative or other support from the ESA Board
- Administer allocated funds for Research Chapter
- Connect with RC convenors at ESA conferences to ensure RCs are operating well and provide an opportunity to identify future initiatives to follow up
- Engage with the Conference WG to ensure RCs conference-related needs are adequately met
- Coordinate annual reporting on activities of individual Research Chapters

Timeline of key actions

July/August - Assess and allocate Round 1 funding from budget item "Research Chapter and Regional Events"

September – Send out annual report template to RC Convenors

Research Chapter Working Group

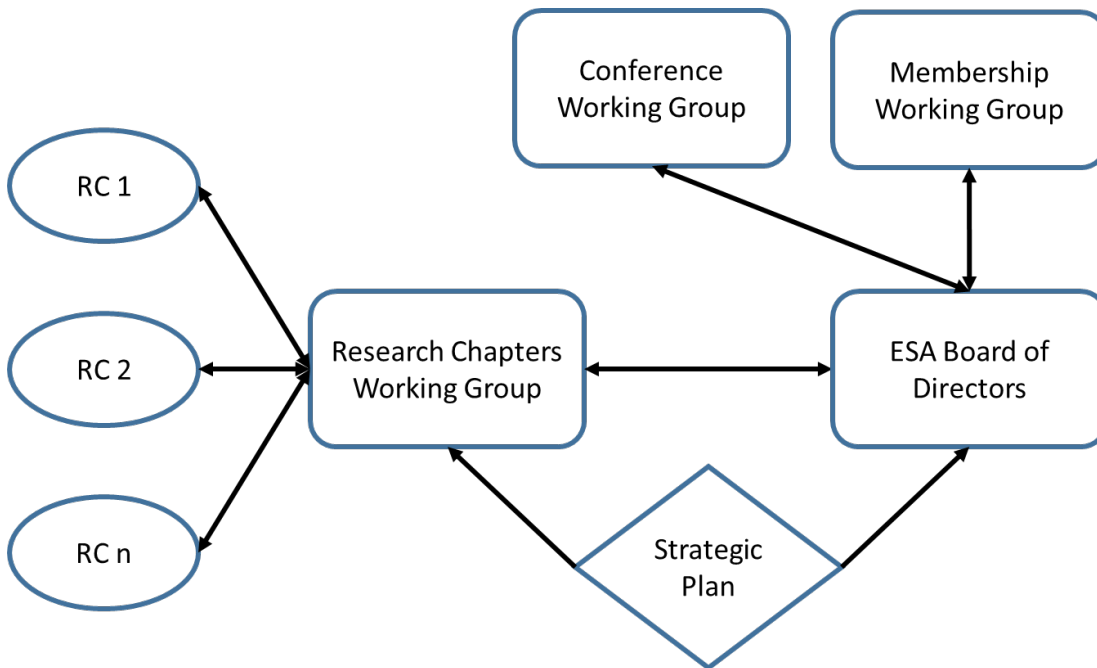
TERMS OF REFERENCE

October – Compile annual reports from RCs into single RC item for inclusion in Annual Report.

November/December– Liaise with RC Conveners and hold RCWG related meetings at the Annual Meeting

February – Assess and allocate Round 2 funding from budget item "Research Chapter and Regional Events"

Governance diagram



Membership

Name/Role	Role/Activities
Sacha Jellinek Chair/ WG Leader	Key contact, driver of the WG, chairs meetings, provides WG reports to the Board.
Emilie Ens General Member	Support and develop initiatives of the WG
Eleonora Egidi General Member	Support and develop initiatives of the WG
Ben Gooden General Member	Support and develop initiatives of the WG
Amy Hahs VP – Research	Observer; Assist RCWG in aligning WG activities with the ESA Strategic Plan; Report to ESA Exec on outcomes from RCWG



Research Chapter Working Group

TERMS OF REFERENCE

Working Group Meetings/Teleconferences

The VP Research will have oversight of this working group and provide leadership and support on behalf of the ESA Board.

The Research Chapter Working Group will meet at least quarterly by skype, and as otherwise requested by the Chair.

Review of the Terms of Reference

These Terms of Reference were adopted by the ESA Board on

29 June 2017

And will be due for revision no later than two years from the above date.